

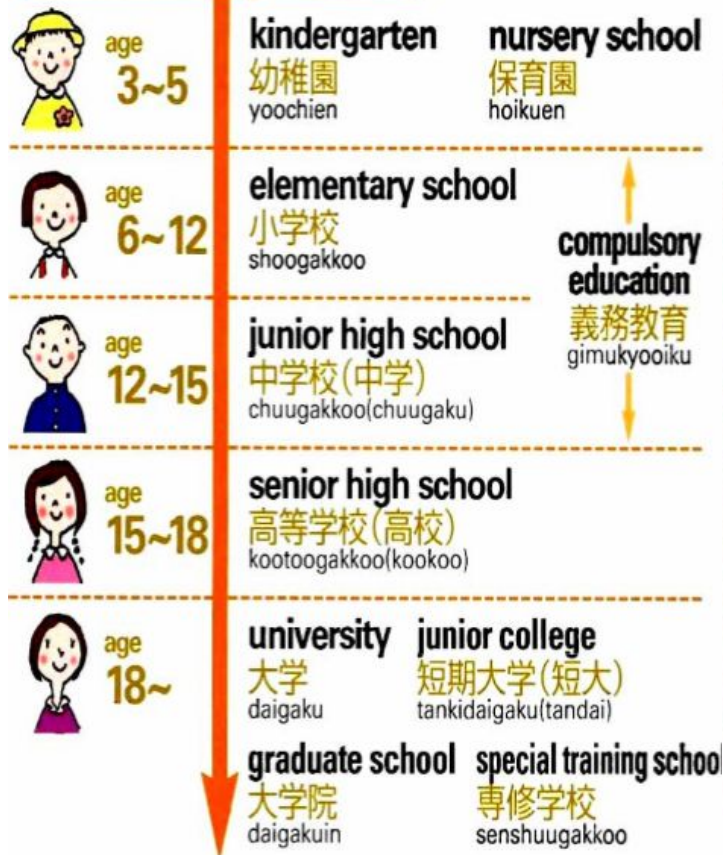


Educational Systems

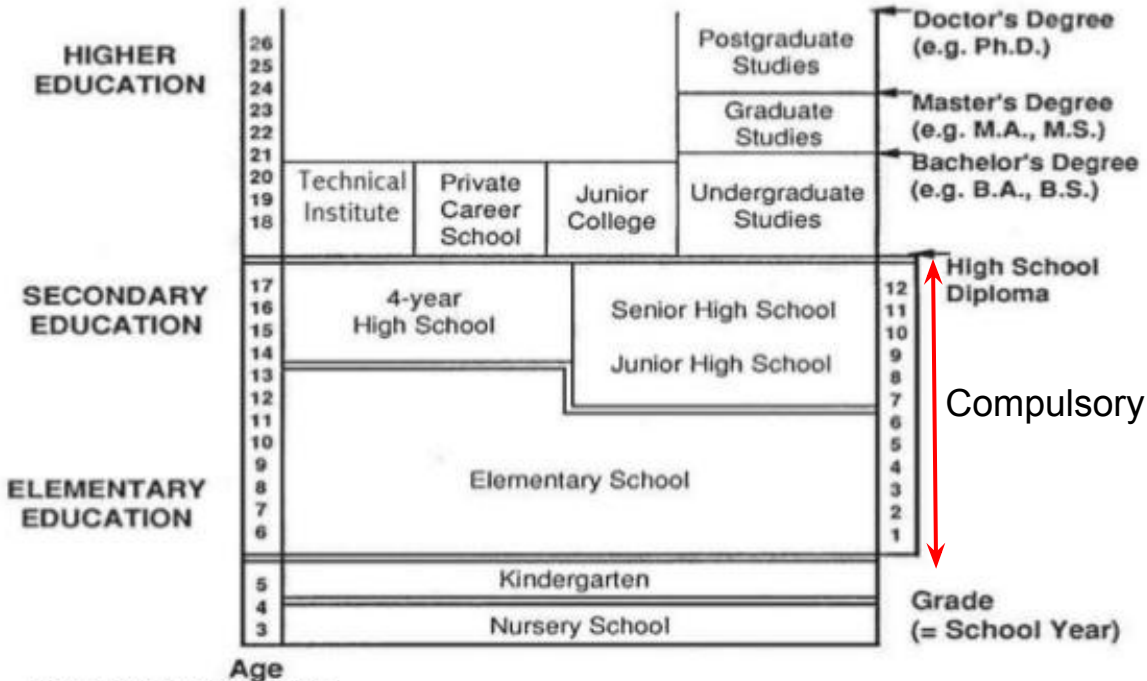
Japan/USA

Daniela Villanueva

Educational System (教育制度)



The System of Education in the U.S.A.



Overview



JAPANESE ELEMENTARY SCHOOL

Curriculum: Japanese, Social Studies, Mathematics, Science, Music, Arts, Homemaking, Physical Education. Moral education is evident during the school's class-cleaning and school lunch activities.

JAPANESE JUNIOR HIGH SCHOOL

Curriculum: Like elementary but students also have homeroom time, clubs and field trips. Students receive their instruction from specialized teachers for each subject area.

JAPANESE SENIOR HIGH SCHOOL

- Elite academic high schools
- Non-elite academic high schools
- Vocational high schools
- Correspondence high schools
- Evening high school

Graduation Requirements, California Departments of Education

High School Subject	State Req. High School Graduation	UC requirements (freshman)	CSU requirements (freshman)
English	3 years	4 years	4 years
Mathematics	2 years	3 years	3 years
Social Studies	3 years	2 years	2 years
Science	2 years	2 years with lab	2 years
Foreign Language	1 year	2 year, 3 recommended	2 years
Visual/Performing Arts	1 year	1 year	1 year
Physical Education	2 year	0	0
Electives	0	1 year	1 year

Entrance exams

High school graduate or prospective high school graduate
 高校卒業者または卒業見込者

Successful examinee for an application exam to university entrance exam

大検合格者
 The qualifying exam is open to anybody who has completed the years of compulsory education. If middle school students pass this exam, they can take the entrance exams for universities without a high school diploma.

中学卒業者が高校進学をせずに、大学入学者検定試験(いわゆる大検)に合格して、大学受験をするケースも多い。

University exam candidate
 受験生



National Universities
 国立大学



Private Universities
 私立大学

July 7月

Examination basic outline announced
 選抜要項発表

Examination subjects announced
 入試科目発表

By late October 10月下旬まで
 Apply for national center test センター試験出願

Mid-January 1月中旬
 Preliminary examinations held at the Centers センター試験(第一次)

University Entrance Examinations 大学入試のしくみ

Late January 1月下旬
 Apply for Secondary Examination
 二次試験出願

Late January 1月下旬~
 Application 出願
 Private University Examinations
 私大入試

Late February 2月下旬~
 Secondary Examinations
 二次試験

Separate installment exam system
 分離分割方式
 Examinations divided up and held in a first phase and second phase
 前期日程と後期日程に分けて実施

Announcements of results
 発表

Success
 合格



In 2000, there were roughly 530,000 candidates.
 2000年は約53万人が受験

Escalator school

(エスカレーター学校) is a school that offers education from elementary or middle (or even from the kindergarten) until university.



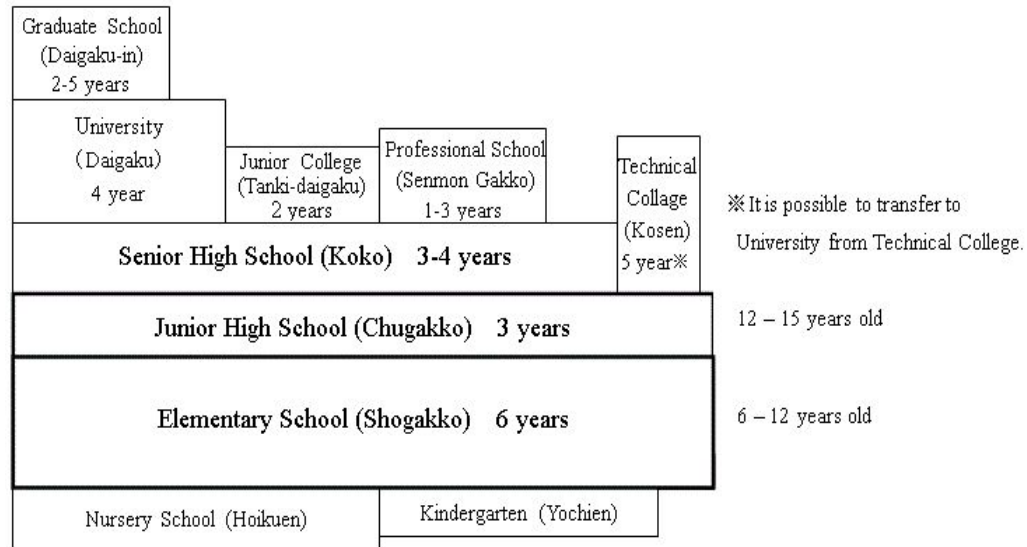
High School Entrance

Tangan suisen

- This is an application for students who specifically wish to attend a private school. Students are only allowed to apply for a single private high school.

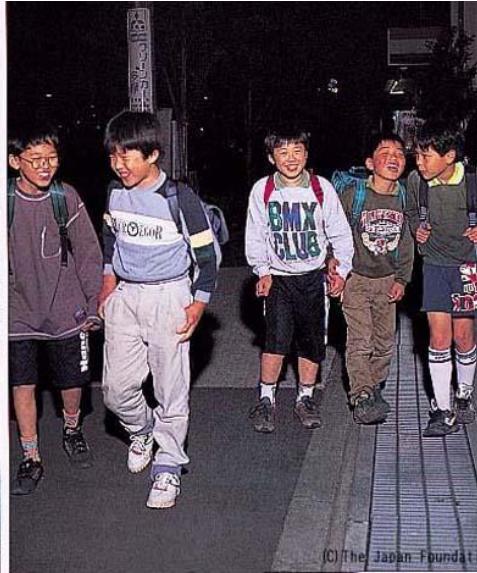
Heigan suisen

- This is an application for students who specifically wish to attend a public school. Students who apply through this process will also be allowed to apply for admission into private schools, in addition to their (public) high school of choice.



Juku/Yobiko

Gakushū juku (cram school) are special private schools that offer lessons conducted after regular school hours, on weekends, and during school vacations.



Yobikō (予備校) are privately-run schools marketed to students who are taking examinations to determine college admissions.

Rōnin (浪人, ろうにん)

Hensachi score

Tells how far from the statistical mean a typical student admitted to a given institution scores on a test. (mean of 50)

“Hensachi means ‘deviation value,’ and is a quantifying method that determines one’s relative rank, not actual ability. Hensachi status, however, painfully suggests to many students that they are inferior to others. Its impact on them and on their attitude to life is so strong that it often lingers throughout their lifetime.”—p. 79, “Mental Health Challenges Facing Contemporary Japanese Society, The ‘Lonely People’ by Yuko Kawanishi

大学2012... 学研責任編集 受験案内

全国の国立・公立・私立 全大学掲載!

河合塾 合格可能性を診断する
提供 最新データ!!
難易予想ランキング

●全大学の学部・学科の特色&入試情報が詳しい!
●受験・入試競争率・学費・オープンキャンパスなどデータ満載
●受験生応援メッセージ! 川村益之& 南沢栄央さん

河合塾サイト
http://www.kawaiijuku.co.jp



English language classes

1. Lessons based around and based on what will appear on exams. Limited time to teach only allows for only what may be on the targeted exams.
2. Text is often uses awkward outdated grammar or is boring and not applicable to student's day to day lives.
3. Not enough time spent in class listening to and speaking conversational English
4. Cultural differences affect open and comfortable practice/application



